

CEILINGS

INSTALLATION GUIDE - DISMOUNTABLE

Hydra Grid

A cells ceiling system that combines a fixed part with dismantlable parts that allow access to infrastructure systems. A selection of shades from an existing fan of colors. Can be painted in any desired shade.

THICKNESS

12 mm

24 mm

HIEGHT

10 cm

20 cm

15 cm

30 cm

MAIN CELL SIZE

60x60 cm

TILE CELL SIZE

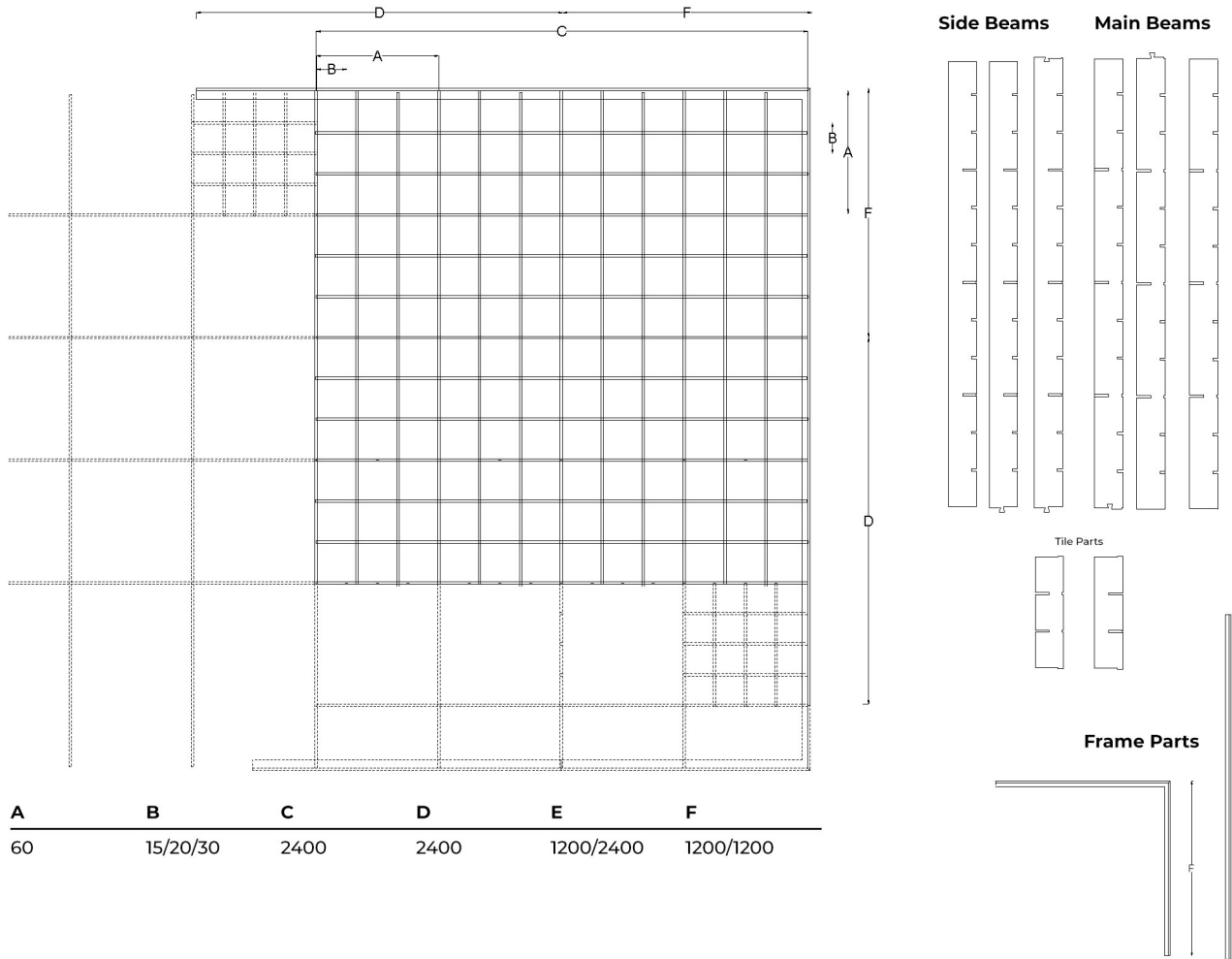
15x15 cm

20x20 cm

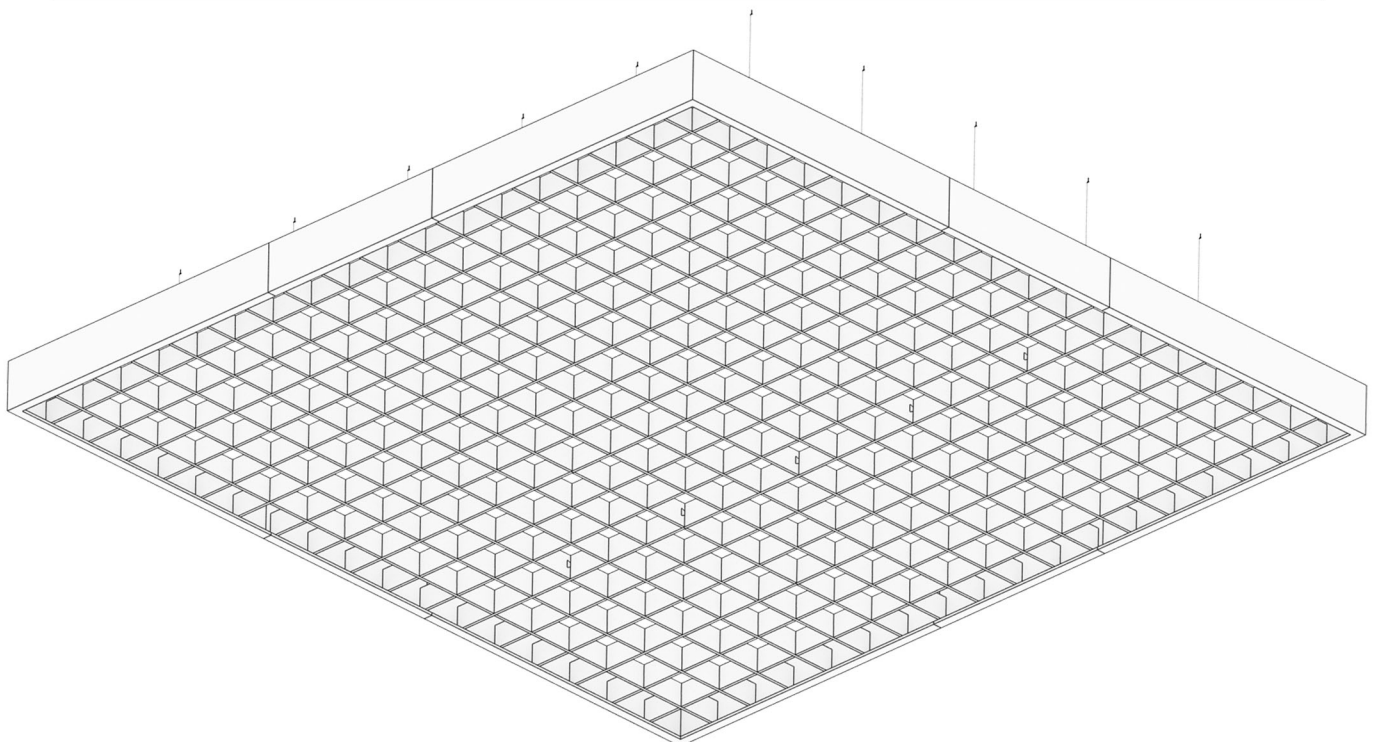
30x30 cm

Customized sizes are available.

DIMENSIONS

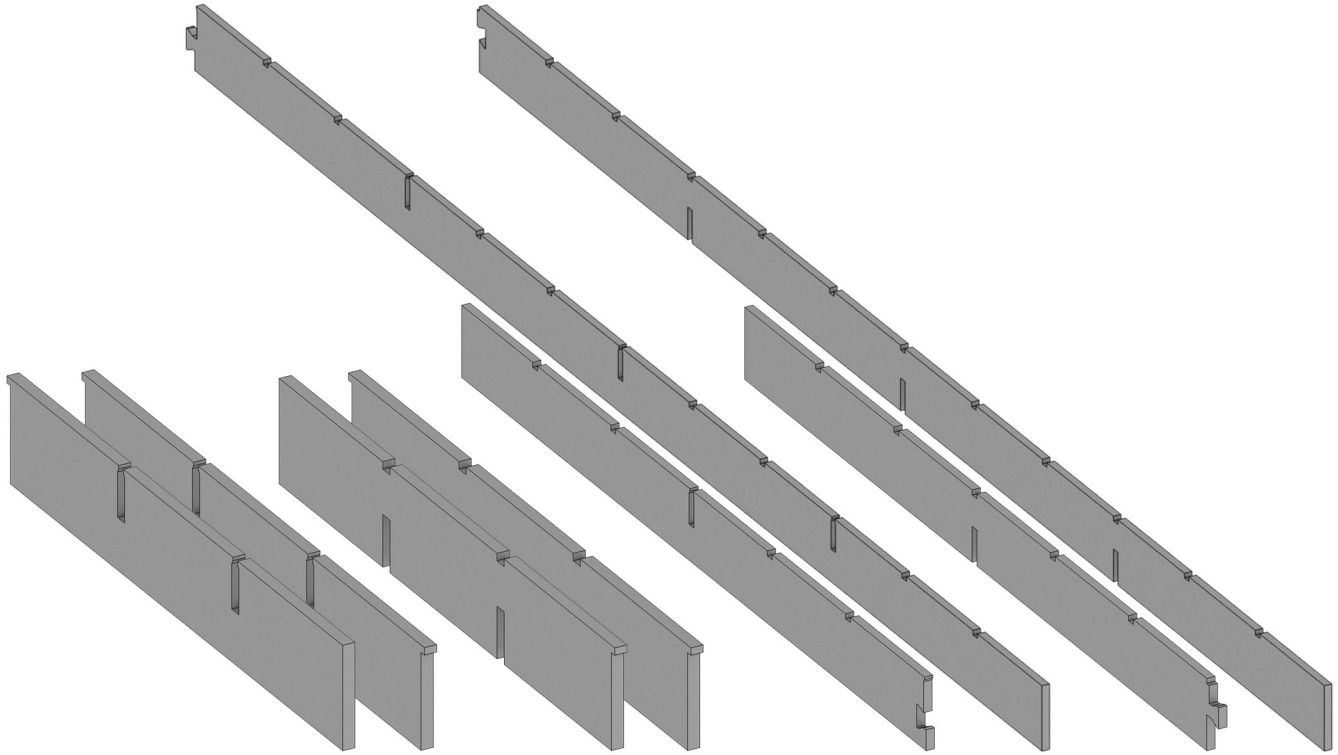


ISOMETRY



INSTRUCTIONS

These are your parts.



Main Beam
Dismountable Tile

Side Beam
Dismountable Tile

Main Beam

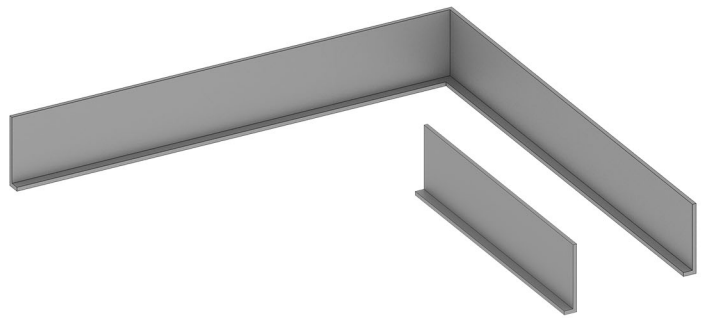
Side Beam



Dedicated Cable Hanging Accessory

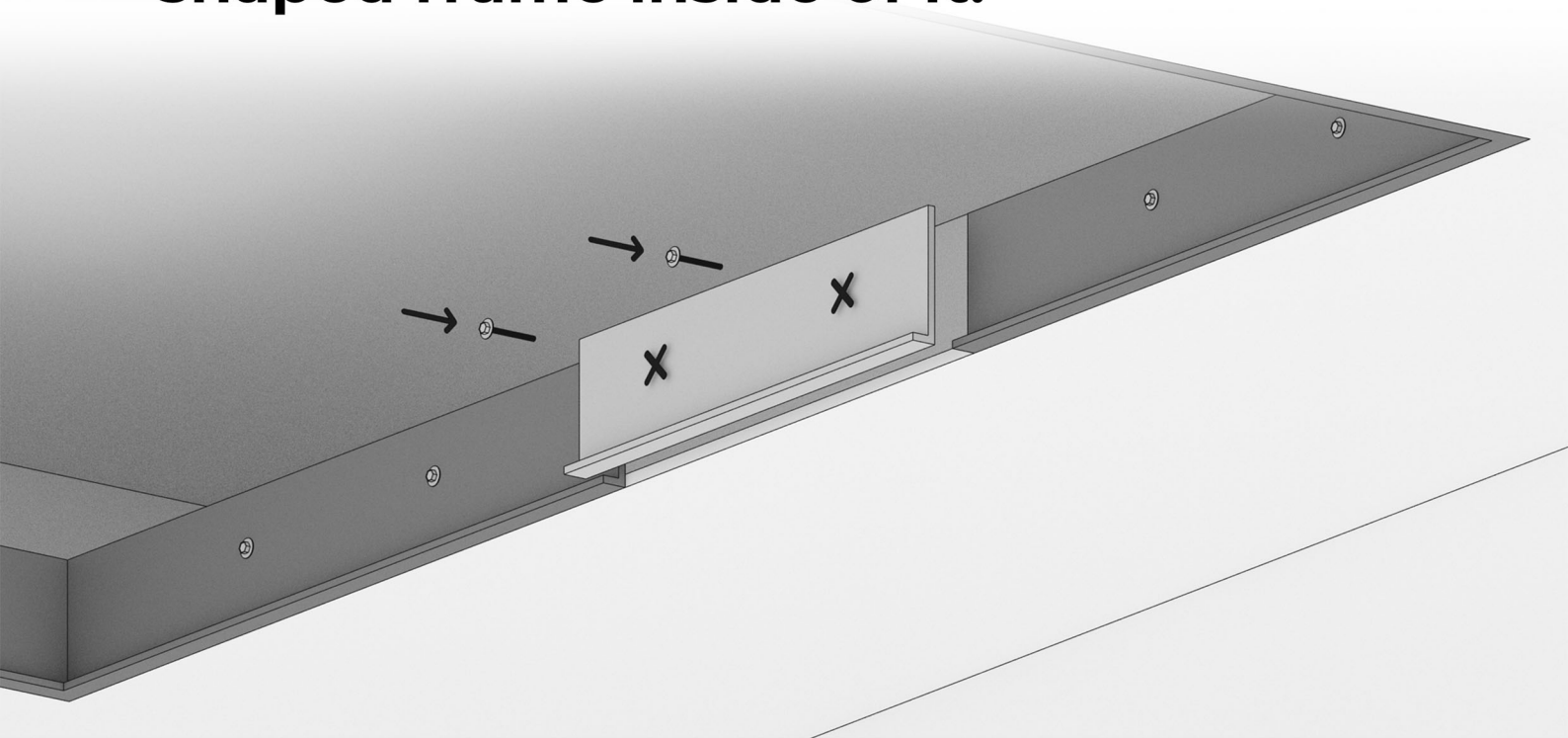


Dedicated U Profile
12mm

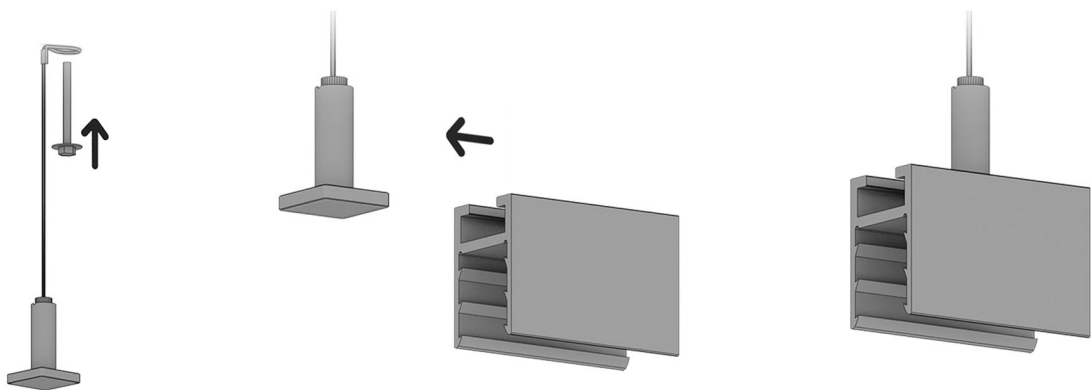


Frame Parts

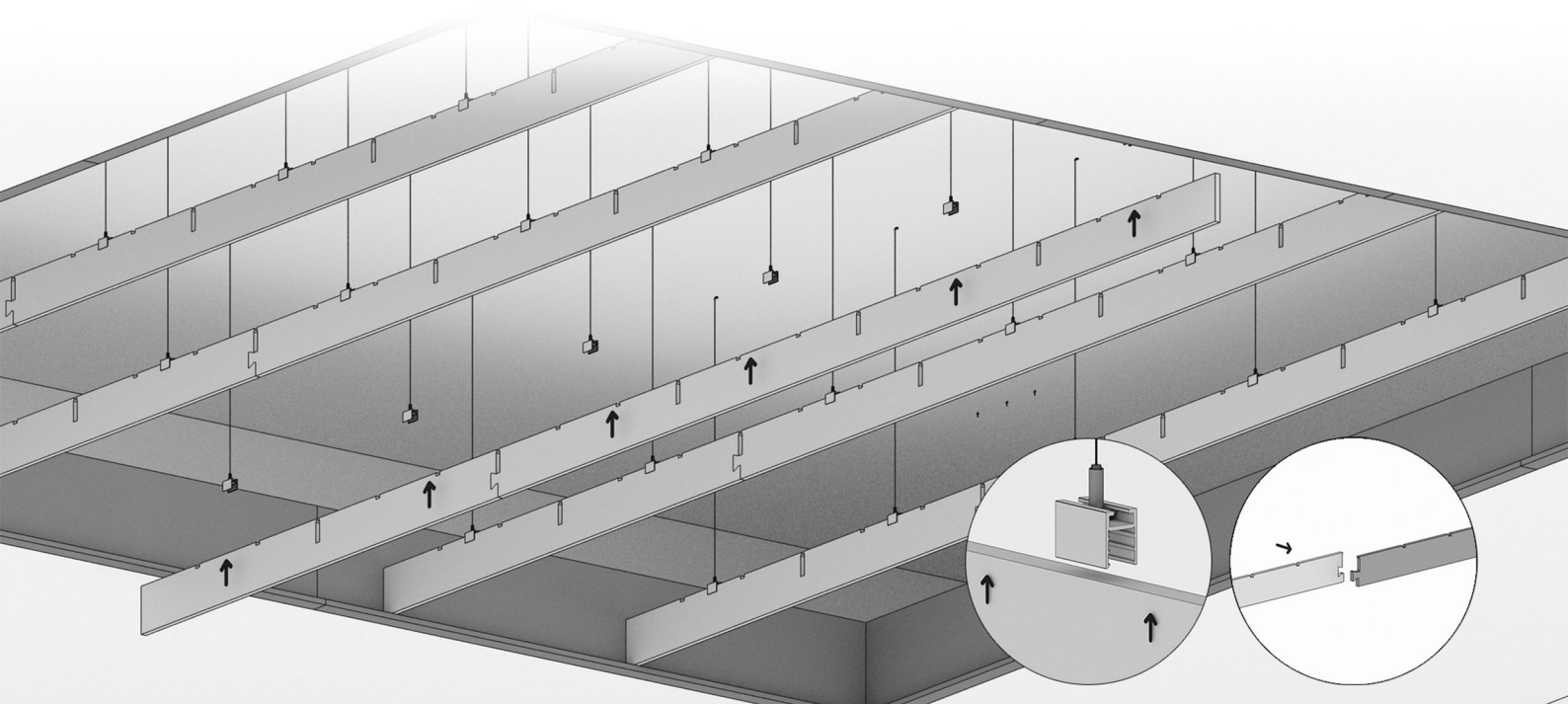
- ① **Mark the ceiling line and install the “L” shaped frame inside of it.**



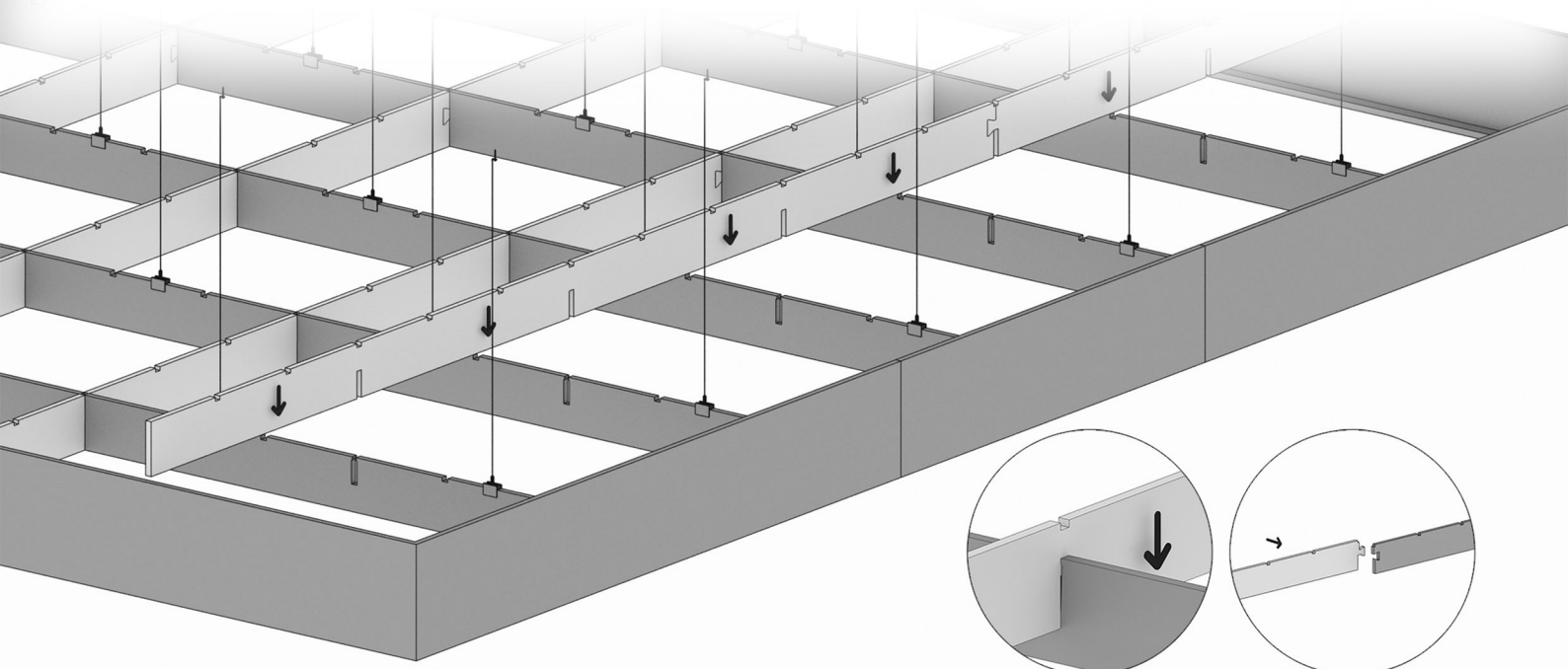
- ② **Screw the cable hanging accessory to the ceiling according to the size of the cells.**



- ③ **Nail the main beams to the hanging U profile, laying on the “L” shape frame.**



- ④ **Connect the Side Beams parts and insert them from above to the Main. Make sure to insert them all the way down.**



- 5 **Connect the tile parts and install them from above. Make sure the teeth are laid in their slots.**

